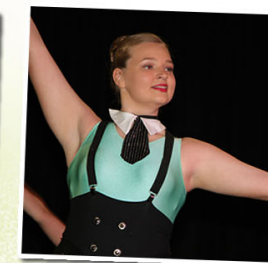


FACILITIES HIRE

Aspley State School Fee Schedule



AS OF January 2024	HALL HIRE	LIBRARY / MUSIC ROOMS	OVAL	NETBALL / BASKETBALL COURTS	TENNIS COURTS
BOND (if required)	\$200.00	\$75.00	\$50	\$100	\$50
Additional Bond (for use of tables, chairs and kitchenette.)	\$100.00				

CASUAL HIRERS – Currently not available

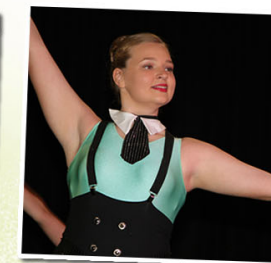
FOR PROFIT <i>Week nights – 6:00pm to 11:00pm</i>	\$80 p/h	\$50 p/h	\$40 p/h	\$80 p/h	N/A
FOR PROFIT <i>Saturday / Sunday</i>	\$80 p/h or \$800 - whole day (10 hours or longer)	\$50 p/h or \$500– whole day (10 hours or longer)	\$40 p/h or \$400 – whole day (10 hours or longer)	\$80	\$25.00 p/h
NOT FOR PROFIT <i>Week nights – 6:00pm to 11.00pm</i>	\$60 p/h	\$35 p/h	\$35 p/h	3.15pm – 9pm \$40.00 p/h	N/A
NOT FOR PROFIT <i>Saturday / Sunday</i>	\$60 p/h or \$600 - whole day (10 hours or longer)	\$35 p/h or \$350 – whole day (10 hours or longer)	\$35 p/h or \$350 – whole day (10 hours or longer)	7am – 3pm \$40 p/h 3pm – 9pm \$60.00 p/h	\$20 p/h

REGULAR HIRERS

TERM HIRE AGREEMENT – <i>Weekly basis</i>	\$40 p/h	\$30 p/h	\$30 p/h	7am - 8.30am \$15 p/h	\$15 p/h
	+ \$5.50 p/h (Kitchen use)			3.15pm-10pm \$30 p/h	

FACILITIES HIRE

Aspley State School Fee Schedule



ADDITIONAL FEES	Access & Security Fee	If a singular building is left unsecured, a security fee of \$125.00 + GST will be incurred for State Government Security and Staff Call Out fees. Each additional building left unarmed will incur an additional charge of \$15.00+GST.
	Cleaning Fee	<p>A Cleaning Fee may be applicable. Refer to below rates as follows</p> <p>Monday to Friday Rate: Hall Cleaning and Toilets: \$36.95 per hour + GST (<i>minimum charge of 2 hours</i>) Additional fee for Hall Kitchen: \$36.95 + GST per hire</p> <p>Saturday Rate: Hall Cleaning and Toilets: \$55.43 per hour + GST (<i>minimum charge of 2 hours</i>) Additional fee for Hall Kitchen: \$54.43 + GST per hire</p> <p>Sunday and Public Holiday Rate: Hall Cleaning and Toilets: \$73.90 per hour + GST (<i>minimum charge of 2 hours</i>) Additional fee for Hall Kitchen: \$73.90 + GST per hire</p>
	Loss of Keys	A reasonable deposit of \$100 +GST applies for collection of the hirer keys which will be refunded upon return of the keys to the office during school hours on the next working day after the end of a Hire Agreement. Any lost and/or not returned keys, will incur a replacement key charge of \$100.00 + GST per key will apply.
	Non Use of Facilities	Failure to advise the school in writing of any decision not to use the facility as per the signed hire agreement will incur the hire costs. Notice of cancellation is required in writing two working days' prior to the planned event to avoid this fee.
	Rubbish Removal	All rubbish generated during the hire is to be removed from school grounds. Failure to remove rubbish may incur a cost of \$100 + GST
	Sound & Lighting	No AV or Lighting equipment provided - It is the responsibility of the hirer to obtain their own sound and lighting.

PLEASE NOTE: All school activities will take precedence over outside hirers.