

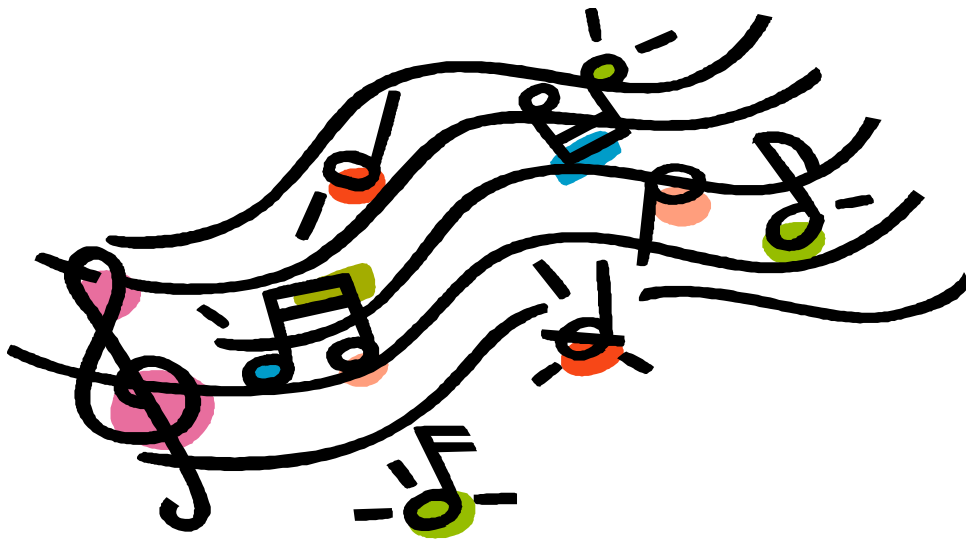
ASPLEY STATE SCHOOL

Proud to be an Independent Public School

Maundrell Terrace, Aspley Qld 4034 | Phone: 07 3863 9111 | Fax: 07 3863 9100

Email: the.principal@aspleyss.eq.edu.au | Web: www.aspleyss.eq.edu.au

Music Program INFORMATION BOOKLET



Where music comes alive!

The Music Program

Music is an integral part of life at Aspley State School. The aim of the Music Program is to develop creativity, which is present in varying degrees in all children. The development of the child's awareness of music, response to music and the development of the capacity for self-expression achieve this.

As for other curriculum areas, learning is activity based and through a variety of such activities, the children are taught the basic skills of music – beat, rhythm, pitch, singing, movement, listening, musical literacy, creating and playing. Great emphasis is placed on the playing aspect.

Staffing in the Music Department at Aspley State School is as follows:

Mrs Leann Griffith- Baker – Principal
Ms Christine Antoni – Deputy Principal
Mrs Briony McIntyre - Classroom Music Specialist
Ms Christine Jabs – Instrumental Teacher (Multi)
Ms Amanda Jerram – Instrumental Teacher (Strings)

Our school has many ensembles and choirs:

- Senior Concert Band
- Junior Concert Band
- String Orchestra
- Junior String Orchestra
- Senior Choir (Year 4-6)
- Junior Choir (Years 2 & 3)
- Boys Choir (Years 4 – 6)
- Piccolo Choir (Year 1)

Many of these groups participate in competitive and non-competitive events during the year.

The following musical instruments are taught at Aspley State School

Recorder & Percussion from Year 3 in Classroom Music

Strings (*Violin, Viola, 'Cello, Double Bass*) from Year 3 –6

Woodwind (*Flute, Clarinet, Bass Clarinet, Saxophone*) from Year 4-6

Brass (*Trumpet, Trombone, French Horn, Euphonium, Tuba*) from year 4-6

Percussion (*Snare & Bass Drum, Aux. Percussion, Xylophone*) – Year 4-6

Bass Guitar – Years 4-6

Please Note:

1. The school Instrumental Music Program is an optional program.
2. Instrumental tuition is free, however, students will be asked to pay for the instrument hire fee and music levy.
3. Placement in the program will only be confirmed annually upon either full payment of the levy or submission of an agreed payment plan by the stated deadline. (to be advised)

Loan Instruments

Some instruments are owned by Education Queensland (Aspley State School) and are loaned on a yearly basis. Some instruments are also owned by students within (or entering) the instrumental program. Recruitment is limited to the loan instruments available as well as the instruction time available. Loans are for a twelve-month

period. Parents are expected to purchase an instrument after the loan has expired. Instruments on a twelve-month loan are flute, clarinet, trumpet, bass guitar, alto saxophone, violin and viola.

The EQ Loan Form appears in the Appendix Section.

Insurance advice: You are asked to add the instrument to your home and contents insurance while it is on loan to you. Education Queensland insurance only covers fire or break and enter incidents at school.

Many hire/buy agreements are available through music retailers. Please see your child's instrumental instructor if you need advice about your purchase. (see appendix)

A loan agreement will be signed before the loan is complete. It is expected that your child will follow guidelines below:*

1. Do not loan the instrument or let other people play your instrument.
2. Notify the school as soon as a problem occurs with the instrument.
3. Maintain the instrument correctly during the loan period.

Selection Process

As stated in Education Queensland's Instrumental Guidelines, recruitment depends on available time for tuition, expansion of the program, size of the school and so forth.

In choosing students for the following year, the following processes are adhered to:

MUSICAL APTITUDE TEST – The Selmer aptitude test is given to all students applying for a position in the program. This tests chords, pitch, melody and rhythm. A score out of 120 is given.

LIAISON WITH CLASSROOM MUSIC TEACHER – The classroom music specialist gives a rating for lesson behaviour, attitude and musical ability.

LIAISON WITH CLASSROOM TEACHER – The year level teacher will give marks for homework, behaviour, attitude and a general comment on the child's ability to cope with the program.

THE INSTRUMENTAL TEACHER – Will test for physical attributes, e.g. height of child, size and agility of fingers, whether child has/will get braces, whether child has an overbite, etc.

All information is collated and children are placed in groups of suited instruments. Cut-off must be made for a balanced instrumentation in the ensembles. Not all students can be accepted due to time allocation and maximum teaching numbers. However, students may be placed on a waiting list.

We try our best to suit the children to their chosen instrument but most of all we want your children to enjoy their musical experience at Aspley State School.

Ascertainment Process

Rationale

1. As many children as possible are to be given the opportunity to participate in the Instrumental Music Program.

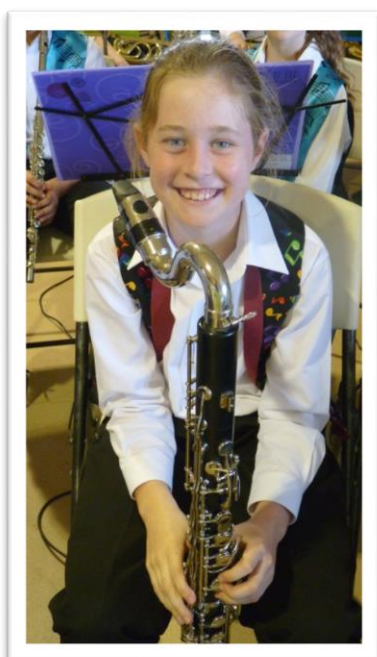
2. All children are to have an equal chance of being involved allowing for prior experience or a lack of experience.
3. With limited school instruments and instruction time, the process to ascertain the rank order of students to be offered school instruments and/or positions is to be thorough.
4. Children in the higher levels will be given the first preference so that a child may have the opportunity of being involved before leaving primary school. However, if attending only for Year 7, it may not be possible to start lessons.
5. In general, strings are started in Year 3 and other instruments in Year 4. Due to exceptional talent, a student may be given a position earlier if resources are available.
6. Children with their own instrument may be offered a lesson time if there is a vacancy. Suitability must be ascertained.
7. Children who are already playing an instrument when entering the school, will be given a position in the program if a vacancy exists.
8. If a vacancy occurs, the child next in the rank order is to be offered an instrument and/or a position in the class. Item 4 (above) applies.
9. Preference will not be given to students receiving private lessons. The ascertainment process (above) will be applied for all places.

Expectations

Children in the instrumental program are expected to become a member of the school-allocated ensemble when they have attained the necessary standards. The ensembles rehearse once a week and perform at school and community functions. Ensemble playing is a very important part of the musician's development. Your child may be required to perform at functions out of school hours and it is expected that they attend these functions, particularly leading up to events. You will be notified of all performances in writing, through the newsletter and the school website.

Any student missing from rehearsals or lessons may be excluded from upcoming performances, at the teacher's discretion. Missing three rehearsals before a performance will lead to this outcome.

The Aspley Instrumental Music Contract appears in the appendix section.



Choir

Experience in choral singing is available for children in years 2-6. Choir membership involves attendance at all rehearsals and performances throughout the year. A \$15 levy applies to the choir.

Music Levy

It is a requirement that every child in the program pays a music charge of \$40. If you are loaning a school instrument, you are also required to pay \$80 for the use of the instrument. These levies are non-refundable.

The choir levy is \$15.

Practice

Children in the music program are expected to practise a minimum of 30 minutes, 5 times a week. The amount of work our teachers can accomplish during a lesson will depend on the work completed at home. Please encourage your child into a routine and provide a suitable space for their practice. A music stand is necessary for the development of good posture.

1. Find a place to play where you won't be disturbed.
2. Place your music on a music stand or in a position where you can play comfortably.
3. Start with something you can play well and enjoy. Practise some exercises for a few minutes. Now work on a new piece or the difficult piece from your last lesson.
4. Play the piece right through slowly. *When you come to a difficult bit stop – decide which notes are giving you trouble and practise them slowly over and over again. Don't play them faster until you can do them easily.*
5. Now work on a piece you know quite well but would like to know better. Listen critically to the sound you are making and try to play as beautifully as possible.
6. Reward yourself for your good work by ending with your favourite piece.

IF YOU ARE HAVING TROUBLE

Are you sure you know the notes?

Do you understand the timing?

Ask for help at your next lesson.

Lessons

Students are given a weekly lesson. Lessons for all instrumentalists will occur in the instrumental music room and will rotate on a weekly basis on an allocated day. Children will be issued with a lesson timetable and must become aware of their responsibilities in turning up on time. Rotation takes place to avoid regular missed lessons in any particular subject. Please note that changes may occur from time to time, due to internal school events and external factors. Children are advised to check notices before each week's lessons. Tuition is given in groups of between two and eight students. Due to the fact that the instrumental music teachers have several schools' programs to cover within each week (and due to rehearsal commitments) it is not possible for students to be taught outside school hours.

N.B.: Parents are asked to note that students must commit themselves for a full year's involvement in the instrumental music program. Notices regarding continuation are sent home during Term 4. Finalisation of the enrolment before this time will involve negotiation with the instrumental teacher and principal.

Private Music Lessons

Students are encouraged to complement the school music program through private music lessons with an external music teacher to extend their playing. A local teacher can be found by visiting the MTAQ Website (Music Teacher Association Queensland) www.mtaq.org.au.

Instrumental Music Teachers are not legally permitted to teach students one-on-one at any time. It is also against the Code of Conduct to accept payment in return for lessons after school.

Junior Band/Junior String Orchestra

The Junior Band forms in Term 2. The band will rehearse weekly and perform at all school functions. The band uniform is required for their first performance at the Semester 1 Music Evening. Music folders are also issued to the children when the ensemble begins and are to be returned when in December, for students leaving

Aspley or not continuing in the program. Junior String Orchestra or Ensemble is formed in Term 4 to allow first year string players the opportunity to perform at the end of year concert. Rehearsals are held within the school day (at present). Uniforms are not required by members of this group. The Junior String orchestra makes its debut at the Semester 2 Music Evening.

Band, Orchestra & Choir Uniform

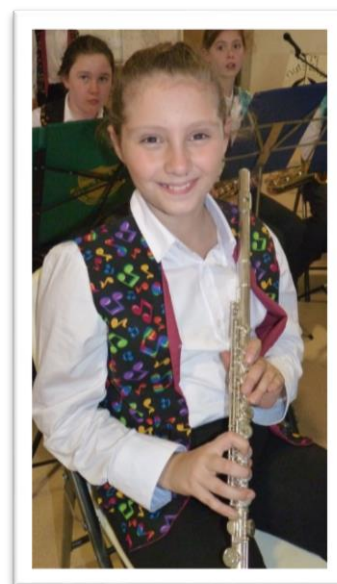
The music uniform consists of black trousers, white long-sleeved shirt, black shoes and black socks. The music vest is issued to band, senior choir and orchestra at every performance and returned immediately. Music uniforms are available for purchase through the school uniform shop. Order forms will be distributed in Term 1.

The Boys Choir wears black trousers, white long sleeved shirt and a black long tie (issued at performances)

Communication with the School

It is very important that Music Staff are well informed of absences and any problems occurring with their music tuition. Notice in writing must be given if your child will be absent from a performance or other event. Teachers are expected to follow up absences and prior notice assists their duties.

If your child is experiencing difficulties at any stage, the instrumental teachers are very happy to discuss the matter with you. Please call the school to make an appointment. The Principal, in conjunction with the Instrumental Music Teacher, may exclude students from tuition if they do not make steady progress either through lack of practice, attendance or aptitude or if they do not attend practices and functions, as required. In such cases, contact will be made with parents prior to such action. In most cases, solutions can be reached to ensure the best outcome for everybody concerned.



We hope you enjoy your involvement with the Aspley State School Instrumental Program.

We aim to instil a life-long love of music in our students.



Stringed Instruments - What you need to purchase

(take this list to the music shop)

ESSENTIAL items which need to be purchased by strings students are as follows (for students using both school instruments and their own instruments):-

For Violin or Viola: (prices given are approximate and will vary)

1. rosin - \$5.50
2. 1 set of spare strings of correct size - \$14 to \$50
3. shoulder rest (of correct size) - up to \$50 (depending on quality and type). Less expensive brands are adequate for beginners. Kun and Willy Wolf brands are the best quality rests available. School violins and violas will be issued with a shoulder rest (which must be returned at the end of the loan period).
4. 2 cleaning cloths (clean rags will do)
5. 1 thin exercise book (for handouts/instruction)
6. tuning device (as advised by teacher - \$6.95 to \$49.95 depending on type). This is not necessary for any student who has daily access to an electric keyboard, piano, ipad/tablet or mobile with a tuning app.
7. music stand for home practice - \$23
8. 2 x 6B pencils
9. "All for Strings", Book 1 for Violin (or Viola) by Anderson and Frost - \$19.95 (prices vary from store to store) A supplementary tutor book with CD/DVD will be loaned to students for use in class and at home. This book is unavailable in stores.

For 'Cello:

1. rosin - \$5.50
2. 1 spare "A" string (of correct size) - \$17.50+. Any student with his or her own instrument will require a full set (about \$80).
3. 2 cleaning cloths (as for Violin/Viola)
4. 1 thin exercise book (as for Violin/Viola)
5. tuning device (as for Violin/Viola)
6. music stand (as for Violin/Viola)
7. 2 x 6B pencils
8. "All for Strings", Book 1 for 'Cello by Anderson and Frost - \$19.95 (prices vary from store to store) A supplementary tutor book with CD/DVD will be loaned to students for use in class and at home. This book is unavailable in stores.

For Double Bass:

1. rosin - \$5.50
2. 1 set spare strings (of correct size) - \$180 (only required by a student using their own instrument; strings may be purchased individually when needed)
3. 2 cleaning cloths (as for Violin/Viola)
4. 1 thin exercise book (as for Violin/Viola)
5. tuning device (as for Violin/Viola)
6. music stand (as for Violin/Viola)
7. 2 x 6B pencils
8. "All for Strings", Book 1 for Double Bass by Anderson and Frost - \$19.95 (prices vary from store to store) A supplementary tutor book with CD/DVD will be loaned to students for use in class and at home. This book is unavailable in stores.

Most items will last indefinitely and can be resold. The set book comes in 3 volumes, so upgrading is necessary as student's progress. (Most students take at least 1½ years, usually longer, to cover Book 1.) Spare strings (for emergencies) need to be replaced as they are used. Steel strings are the most economical. Please note that brands and prices vary a great deal between stores for items such as rosin and strings – it is advisable to ring stores and compare prices. Local general music stores, as well as the specialist retailers carry some or all of these necessary accessories.

Woodwind/Brass & Percussion - What you need to purchase (take this list to the music shop)

ALL STUDENTS REQUIRE THE FOLLOWING ITEMS BY WEEK 2 NEXT YEAR

<i>Flute</i>	<i>Clarinet</i>	<i>Bass Clarinet</i>
Essential Elements 2000 Book 1 for Flute Cleaning Cloth (for the inside of the instrument – this can be a clean, blue chux cloth) Folding Music Stand	Essential Elements 2000 Book 1 for Clarinet 5 x <u>Size 2</u> Clarinet Reeds Cork Grease Pull Through Reed Guard (2 or 4) Folding Music Stand	Essential Elements 2000 Book 1 for Bass Clarinet 5 x <u>Size 2</u> Clarinet Reeds Pull Through Reed Guard (2 or 4) Folding Music Stand
<i>Alto Saxophone</i>	<i>Tenor Saxophone</i>	<i>Trumpet, Euphonium & Tuba</i>
Essential Elements 2000 Book 1 for Alto Saxophone 5 x <u>Size 2</u> Alto Saxophone Reeds Pull Through Reed Guard (2 or 4) Folding Music Stand	Essential Elements 2000 Book 1 for Tenor Saxophone 5 x <u>Size 2</u> Tenor Saxophone Reeds Pull Through Reed Guard (2 or 4) Folding Music Stand	Essential Elements 2000 Book 1 for Trumpet, Tuba or Baritone B.C 1 bottle Al Cass Valve Oil Slide Grease Folding Music Stand
<i>Horn</i>	<i>Trombone</i>	<i>Percussion</i>
Essential Elements 2000 Book 1 for Horn 1 bottle Rotor Oil Slide Grease Folding Music Stand	Essential Elements 2000 Book 1 for Trombone Slide & Tuning Slide Cream Folding Music Stand	Essential Elements 2000 Book 1 for Percussion One pair 5A sticks Drum Pad (for home only) Folding Music Stand
<i>Bass Guitar</i>		
Essential Elements 2000 Book 1 (for Bass Guitar) Bass Guitar lead (min. 3 metre) Folding Music Stand		

MUSIC SUPPLIERS

Ellaways Music

Gympie Road, Kedron, 3359 8266

(Please write down your purchases on the shop counter as the school gets points for your spending!)

Mick's Mobile Music (Second Hand Instrument Supplier)

c/o Mick Morgan

0416150213

Woodswind and Brass (Instrument Hire and repairs)

1300378452

Arties Music

Aspley Hypermarket

Morris Brothers Music

Stafford

Simply for Strings

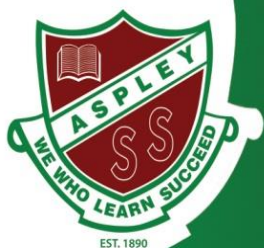
Red Hill, 3368 3666

Animato Violin Shop

Eagle Farm, 1300 739777

Allans Billy Hyde

Lutwyche



ASPLEY STATE SCHOOL

Proud to be an Independent Public School

Maundrell Terrace, Aspley Qld 4034 | Phone: 07 3863 9111 | Fax: 07 3863 9100

Email: the.principal@aspleyss.eq.edu.au | Web: www.aspleyss.eq.edu.au

INSTRUMENTAL MUSIC PROGRAM ENROLMENT CONTRACT

Student Details

Name: _____

Year Level (2017): _____

Instrument: _____

Instrumental Teacher: Amanda Jerram / Christine Jabs

Student Commitment

I agree to:

1. Attend all lessons, rehearsals and performances on time.
2. Practise regularly, a minimum 30 minutes, five times a week.
3. Care for and maintain the instrument and replace accessories.
4. Bring the appropriate book, pencil, folder and instrument to all lessons, rehearsals and performances.
5. Assist with the setting up and packing up of ensemble equipment.

Parent Commitment

I agree to:

1. Support my child in his/her home practice.
2. Support my child in honouring this agreement.
3. Advise the school of my child's absences prior to lessons, rehearsals and performances.

I agree to follow all of the guidelines listed above. I understand enrolment is **for a minimum of one year** and that a levy is payable to the school office at the commencement of each year's enrolment in the instrumental music program.

Parent

Student

Date

Parent's Email Address (please print)



EQ11 External Request for Equipment is to be completed when loaning Department of Education, Training and the Arts equipment to employees, students or community organisations for use after hours, during school holidays on, or away, from official premises.

DETAILS OF REQUISITIONER / PERSON TO WHOM EQUIPMENT IS ON LOAN		
Organisation	ASPLEY STATE SCHOOL	Address; Horn Road ASPLEY, 4034
Student:		Telephone: 38639111
Year Level:		
Location and Use of Equipment (STUDENT ADDRESS)		
Reason for Request - Student loan for use in the Aspley State School Instrumental Music Program		

DETAILS OF EQUIPMENT ON LOAN			
Description / Type:		Brand:	
Serial Number		Asset Number	
Accessories: (if applicable)		For ICT equipment, Build Standard: (e.g. MOE; 1.XSOE)	
Commencement loan date:		Expected date of return:	Date returned:
Officer receiving returned equipment	Name: _____	Signature: _____	

INDEMNITY
Fair wear and tear excepted, and for the duration of this transfer, I/we agree to indemnify Education Queensland against loss or damage from any cause whatsoever, to the equipment detailed herein and, in the event of damage to restore and deliver such equipment to Education Queensland, in the condition in which it was received, or to replace the damaged equipment with other equipment of equivalent functionality.
Signature _____ Date ___ / ___ / ___ (Teacher to sign)

APPROVAL FOR LOAN
I authorise the loan of the equipment to the parent/guardian for, and on behalf of, the student. (Cross out "to the parent/guardian and onstudent" if equipment is not being loaned to a student.)
Signature of School Approving Officer: _____ (Teacher to sign)
Name: _____ Designation; Inst Music Teacher Date: ___ / ___ / ___